



FOR AUTHORIZED USE ONLY

**SHRI GURU GOBIND SINGHJI
INSTITUTE OF ENGINEERING & TECHNOLOGY,**

VISHNUPURI, NANDED – 431 606

Quotation Notice & Quotation

For

“Making shed to compressor of Robotics Center”



**SHRI GURU GOBIND SINGHJI INSTITUTE OF ENGINEERING
& TECHNOLOGY, VISHNUPURI, NANDED-431 606.**

Date :- 24/11/2021

SHORT NOTICE FOR CONTRACTORS


Sealed quotations are invited for Making shed to compressor of Robotics Center. The prescribed format of this work is available our institute web site <https://sggs.ac.in/tenders-site-section/>, from 25/11/2021 to 03/12/2021. The interested Govt. registered civil contractors/Agencies are requested to give their quotations for above mentioned work up to 03/12/2021 before 01.30 p.m. If possible, the quotations will be opened at 3.00 p.m. on the same day or next working day in the presence of contractor who will be remaining present.

The rights are reserved to accept or reject any or all quotation without any notice.

The contractors/Agencies should attach the following documents with Quotation :-

1. The contractor should attach with quotation the Registration copy of contractor with any of these Government Department PWD, CPWD, BSNL, MJP, MSSIDC and DIC.
2. Certificate of GST No.

In the absence of above any documents quotation stand cancelled.


Site Engineer



Copy to the :

- 01 All Notice Boards in this Institute.
- 02 Concerned file No. 6
- 03 Institute web site.

Name of Contractor :- _____



**SHRI GURU GOBIND SINGHJI INSTITUTE OF ENGINEERING &
TECHNOLOGY, VISHNUPURI, NANDED-431 606.**

QUOTATION

Name of the Work :- Making shed to compressor of Robotics Center.

Name of work	Qty.	Unit	Rate per Unit	Total Amount
Item No.1: Removing paver blocks without bed concrete including stacking the materials as directed with all leads, lifts etc. complete.	2.16	Sq.m.		
Item No.2: Removing rich mix cement concrete including stacking the spoils as directed with all leads, lifts etc, complete.	0.43	Cu.m.		
Item No.3: Excavation for foundation in earth, soil of all types, sand, gravel and soft murum, including removing the excavated material upto a distance of 50m. beyond the building area and stacking and spreading as directed, dewatering, preparing the bed for the foundation and necessary back filling, ramming, watering including shoring and strutting etc. complete. (Lift upto 3 m.) By Manual Means.	0.73	Cu.m.		
Item No.4: Providing and laying Cast in situ /Ready Mix cement concrete in M15 of trap /granite /quartzite /gneiss metal for bed blocks, foundation blocks and such other items including bailing out water, Steel centering, formwork, laying/ pumping, compacting, roughening them if special finish is to be provided, finishing uneven and honey combed surface and curing etc. complete. The Cement Mortar 1:3 plaster is considered for rendering uneven and honey combed surface only. Newly laid concrete shall be covered by gunny bag, plastic, tarpaulin etc. (Wooden centering will not be allowed.), with fully automatic microprocessor based PLC with SCADA enabled reversible Drum Type mixer/ concrete Batch mix plant (Pan mixer) etc. complete. With fine aggregate (Natural Sand / Crushed sand VSI Grade finely washed etc) Spec .No. Bd. A 1	0.73	Cu.m.		
Item No.5: Providing and fabricating structural steel work in rolled sections like joists, channels, angles, tees etc. as per detailed design and drawings or as directed including cutting, fabricating, hoisting, erecting, fixing in position making riveted / bolted /welded connections without connecting plates, braces etc. and including one coat of anti corrosive paint and over it two coats of oil painting of approved quality and shade etc. complete.	276.39	Kg.		

<p>Item No.6: Providing and fixing colour coated Zinalume (R) AZ150 (min 150 gms/sq.mt. total on each side) profiled sheets for roofing. The feed material is manufactured out of nominal 0.45mm Base Metal Thickness (BMT) (0.5 mm TCT), Hi-strength steel with min.550 MPa yield strength, metallic hot dip coated with Aluminum- Zinc alloy (55% aluminum 43.4% zinc 1.6% silicon) with COLORBOND (R) steel quality super durable polyester paint coat (with inorganic pigment). The paint shall have a total coating thickness of nominal 35 um, comprising of nominal 25 um exterior coat on top surface and nominal 10 um reverse coat on back surface. Profile sheet shall have nom. 950-1050 mm effective cover width and nominal 5-30 mm deep ribs with subtle square fluting in the five pan at nominal 180-250 mm center-to-center. The end rib shall be designed for anti-capillary groove. and return leg. The feed material should have coil manufacturers product details marked a regular interval. Including fasteners with min. fastened with min. 25 um Zinc-Tin alloy coated, Hex head, self-drilling screw etc. complete. (weight of profile 4.52 Kilogram /Square Metre)</p>	13.42	Sq.m.		
Total Amount :-				

(Rate should be inclusive of GST)*

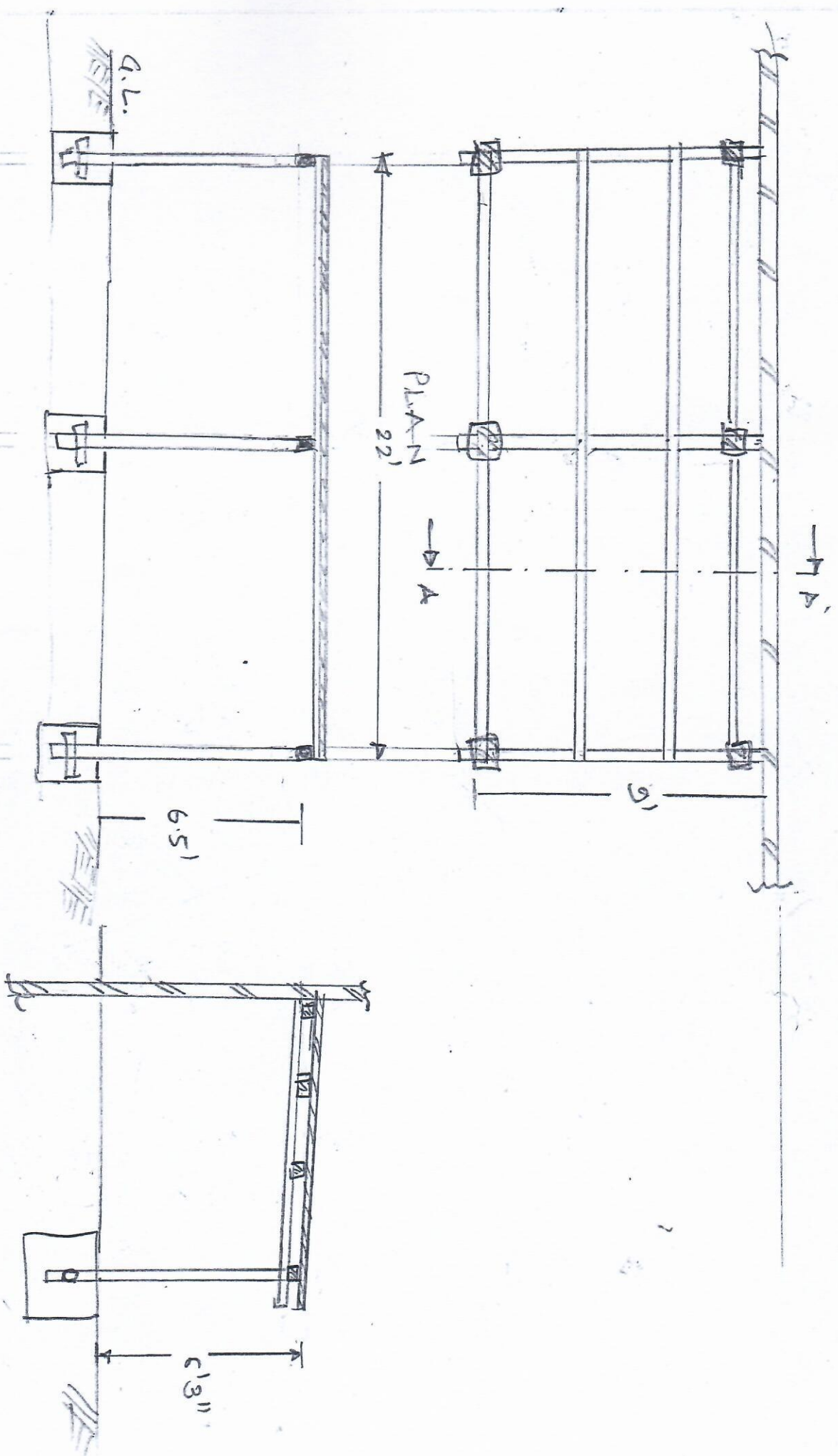
(Inwards)

Place :-

Date :-

Sign. of Contractor

FRONT VIEW



Section AA-AA

Handwritten signature and initials